



# Seagrave Village Primary School

Green Lane, Seagrave, Loughborough, Leicestershire, LE12 7LU  
Telephone: 01509 812486, E-mail: [office@seagrave.bepschools.org](mailto:office@seagrave.bepschools.org)



7<sup>th</sup> September 2020

Dear Parents and Carers,

## Attendance and Home Learning

We have started to notice an increase in absence at school, so far we haven't had any positive cases of corona virus reported. I want to share the flow charts (attached) that have been issued by the trust. This is the guidance that I am following when children present with illness. We want to support children to be in school as much as possible.

In the case of pupils having to have time off school due to self-isolation or due to taking a test for Covid-19, the following is how our home learning will work.

- If your child goes for a test or is isolating while a family member goes for a test, you can access some home learning packs on the relevant home learning page on our website. <https://seagravevillageprimaryschool.secure-primariesite.net/virtual-learning/>
- If your child or a member of your family tests positive for coronavirus, then they will need to self-isolate. In this circumstance, (if your child is well enough) your child's class teacher will be in touch to support you with home learning during this period – this may be via telephone, MS teams or email.
- If a whole class needs to isolate, then your child's class teacher will provide 3 recorded lessons per day alongside some work to be completed each day. We will also be using MS Teams to communicate with you. Your child has a personal email address and has been put into a 'team' with the other children from their class.

Please remember, if your child does not have coronavirus symptoms and would normally be well enough to come to school then there is no need to keep them off. We are expecting most children to attend school every day, only when children are truly unable to attend do we expect any absences. As I'm sure you are aware our usual school life is continuing to move forward and the children are enjoying being back to school and enjoying their new topics.

On the next page you will find the flow charts and then the letter issued by Leicestershire County Council outlining their stance on attendance at this time.

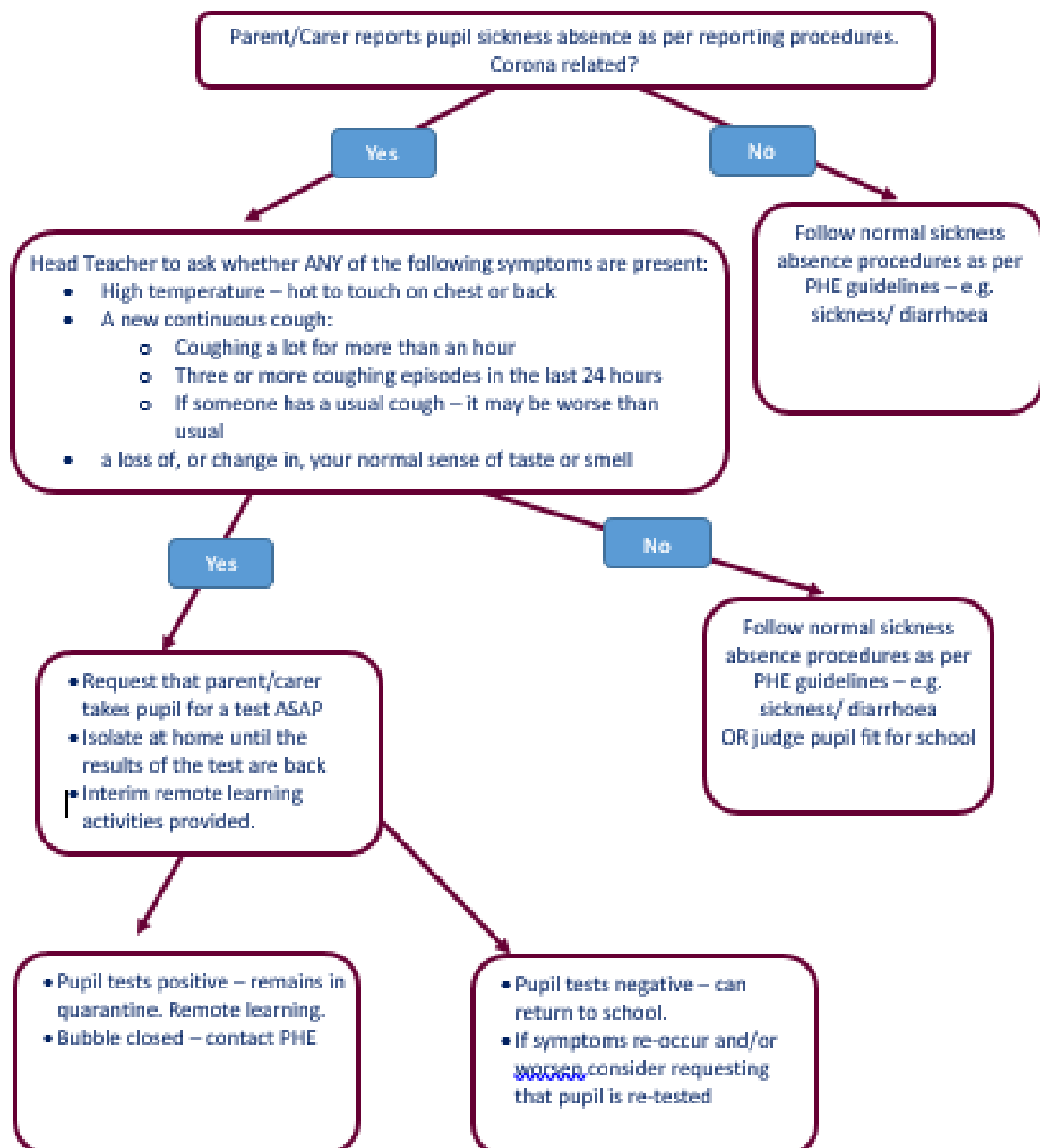
Thank you again for your continued support.

Yours Sincerely,

Mrs Litchfield



## Pupil sickness absence/corona related symptoms





## Member of pupil's family reporting symptoms – within the household

Member of pupil's family reports member of household with symptoms – PUPIL has NO symptoms.

- Ask member of household to get tested
- Pupil remains in school unless they develop symptoms OR a positive test is confirmed

Test returns negative

Pupil remains in school

Member of household tests positive, Pupil removed from school and a test is requested

Pupil tests negative. Pupil remains in quarantine but bubble remains open

Pupil tests positive. Bubble closed – contact PHE.



# Seagrave Village Primary School

Green Lane, Seagrave, Loughborough, Leicestershire, LE12 7LU  
Telephone: 01509 812486, E-mail: [office@seagrave.bepschools.org](mailto:office@seagrave.bepschools.org)



## Letter sent from Leicestershire County Council:

Dear Parent/Carer,

This is a message for parents about school attendance from September 2020.

We are sure parents are delighted that schools are re-opening to all pupils in September 2020 and children can return to their usual routines and benefit from and enjoy all that is on offer to them at school.

The government have pledged significant financial support following this unprecedented closure of schools, to allow schools to begin to address any gaps in learning for children. All children will benefit from this focused approach to teaching, particularly during the first term from September.

In March when the coronavirus (COVID-19) outbreak was increasing, the government made it clear that no parent would be penalised or sanctioned for their child's non-attendance at school as schools were then closed to all but those specific groups of pupils.

Now the circumstances have changed and the measures taken by the government have meant that children can safely return to school. It is vital for all children to return to school to minimise as far as possible the longer-term impact of the pandemic on their education, wellbeing and wider development. We know that children have not only missed out on learning but also missed being with their friends and the wider social aspects of school.

Missing out on more time in the classroom risks pupils falling further behind. Those with higher levels of absence tend to achieve less well in both primary and secondary school. ***Therefore, the Department for Education have confirmed that school attendance is compulsory again from the beginning of September 2020 when schools re-open after the summer break.***

This means from 1<sup>st</sup> September 2020, the usual rules on school attendance apply, including:

- It is the parents' duty to send their child to school regularly if they are of compulsory school age;
- It is the responsibility of schools to record attendance and follow up absence
- the local authority is able to resume the use of legal sanctions, including penalty notices and processes that may lead to prosecution in court for persistent absence.

If you have any concerns about your child returning to school when they re-open for the Autumn Term you should discuss your concerns with the school directly. The school will be able to offer reassurance about the protective measures they have in place, and all schools work closely with health and other agencies who may also be able to help if needed.

In addition, the Local Authority's view is that it is not advisable to take your child out of school for a family holiday or other term time leave once schools re-open, as your child could miss out on the focussed additional support for pupils to close the gap in learning missed during the period of lockdown. If any parents are considering taking their child out of school they must request the leave by following the school's 'request for leave of absence' procedure, allowing ample time for the Headteacher to consider if there are exceptional circumstances. The more regularly your child attends school, the more they will be able to benefit from teaching and catch up. Any leave that is unauthorised by the school may lead to Penalty Notices being issued.



# Seagrave Village Primary School

Green Lane, Seagrave, Loughborough, Leicestershire, LE12 7LU

Telephone: 01509 812486, E-mail: [office@seagrave.bepschools.org](mailto:office@seagrave.bepschools.org)



**BRADGATE**  
Education Partnership

After so much disruption to your child/ren's education over recent months, the most important thing is that schools and parents work together to get children back into school. The school is ready to listen so please contact them if you have any worries and they will try to help you.

We wish you and your child all the best for the coming academic year.