

Hansel & Gretel



By Ruth Merttens
Illustrated by Anne Holm Petersen



This is Hansel. He is a good dog – a lot of the time!



This is Gretel. She is a good cat – a lot of the time.



Hansel and Gretel love Dad.



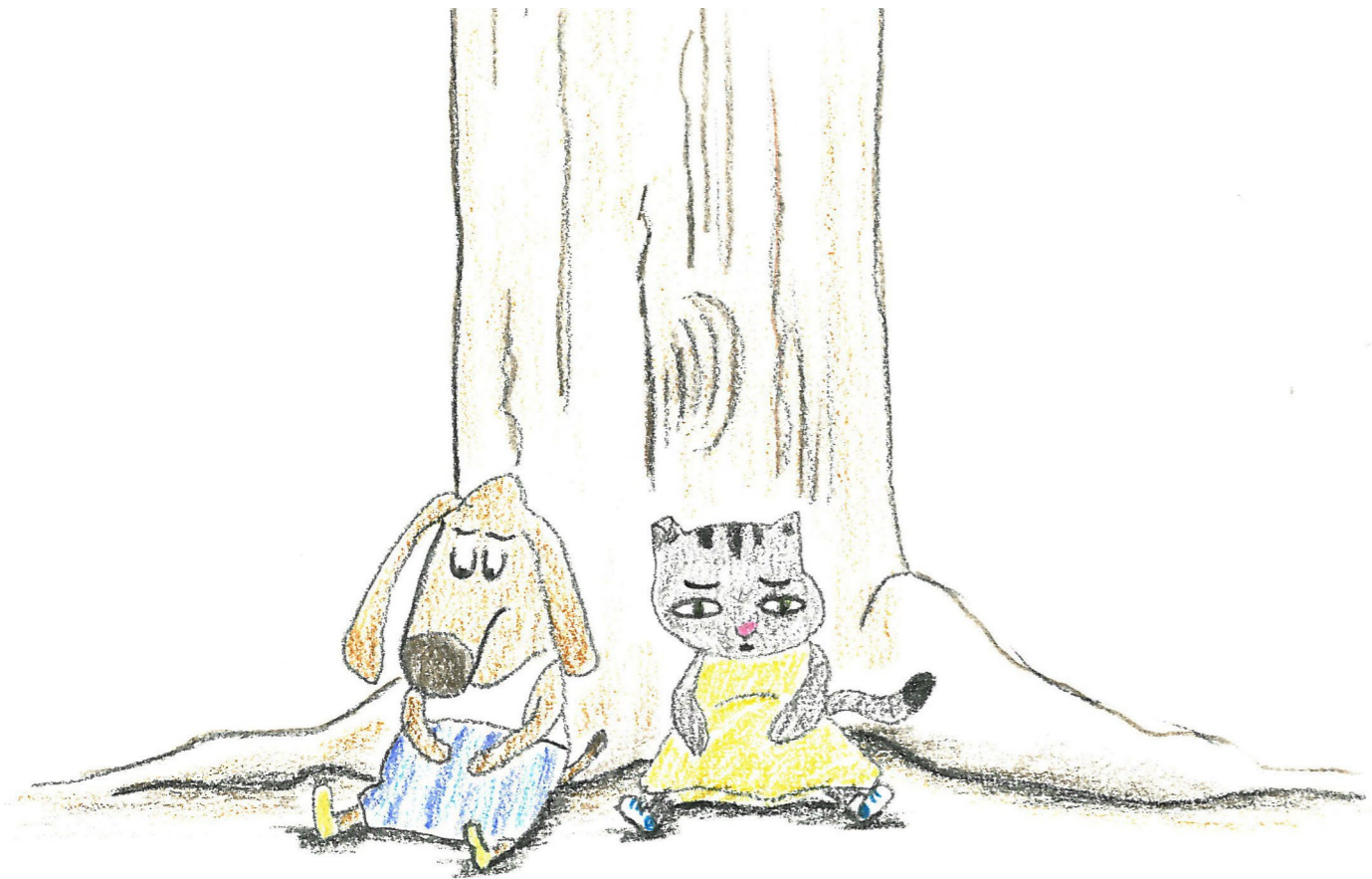
Here is Griselda. She is not happy with Hansel and Gretel.



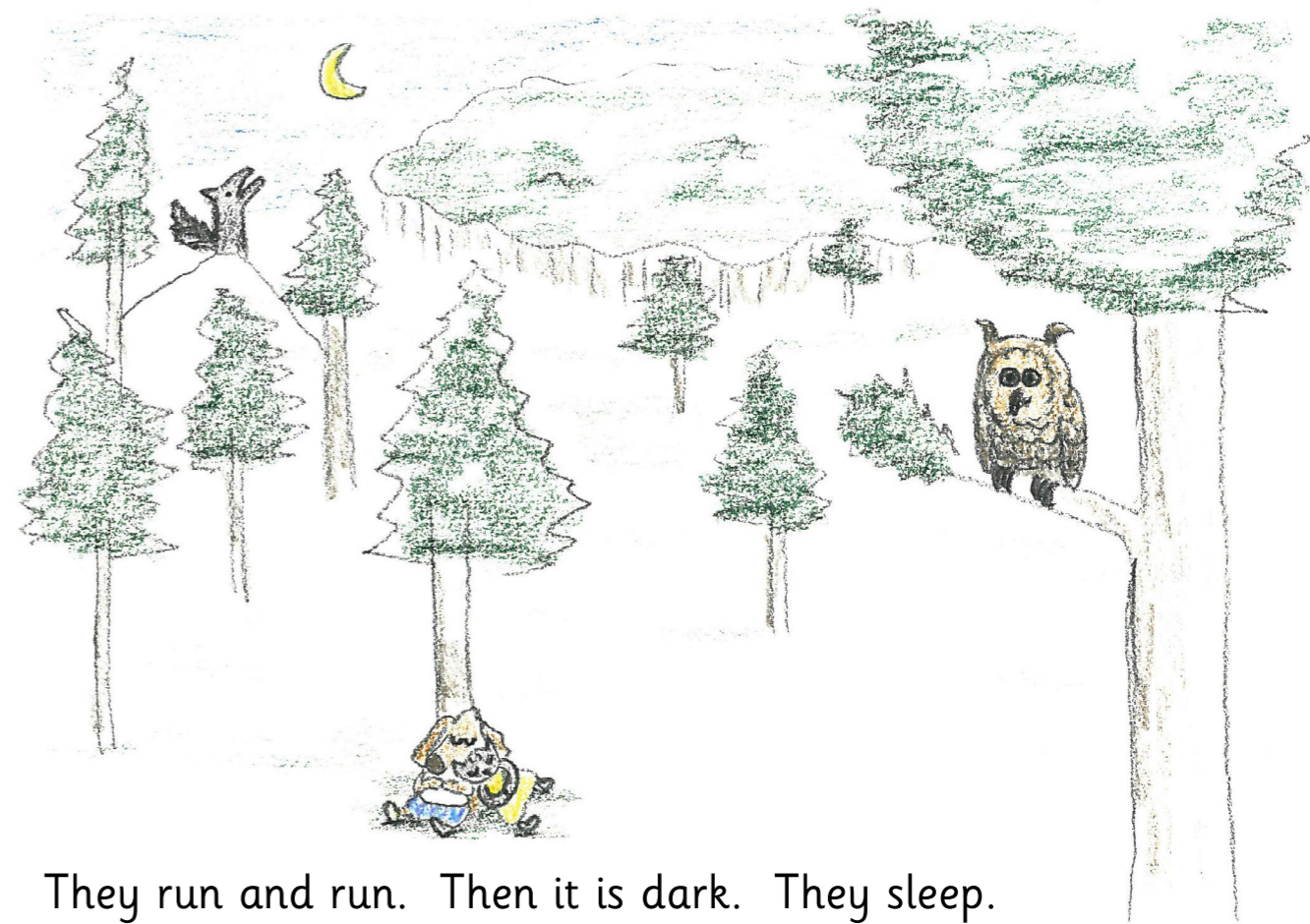
Griselda wants Hansel and Gretel to go away.



She takes Hansel and Gretel into the forest and leaves them there.



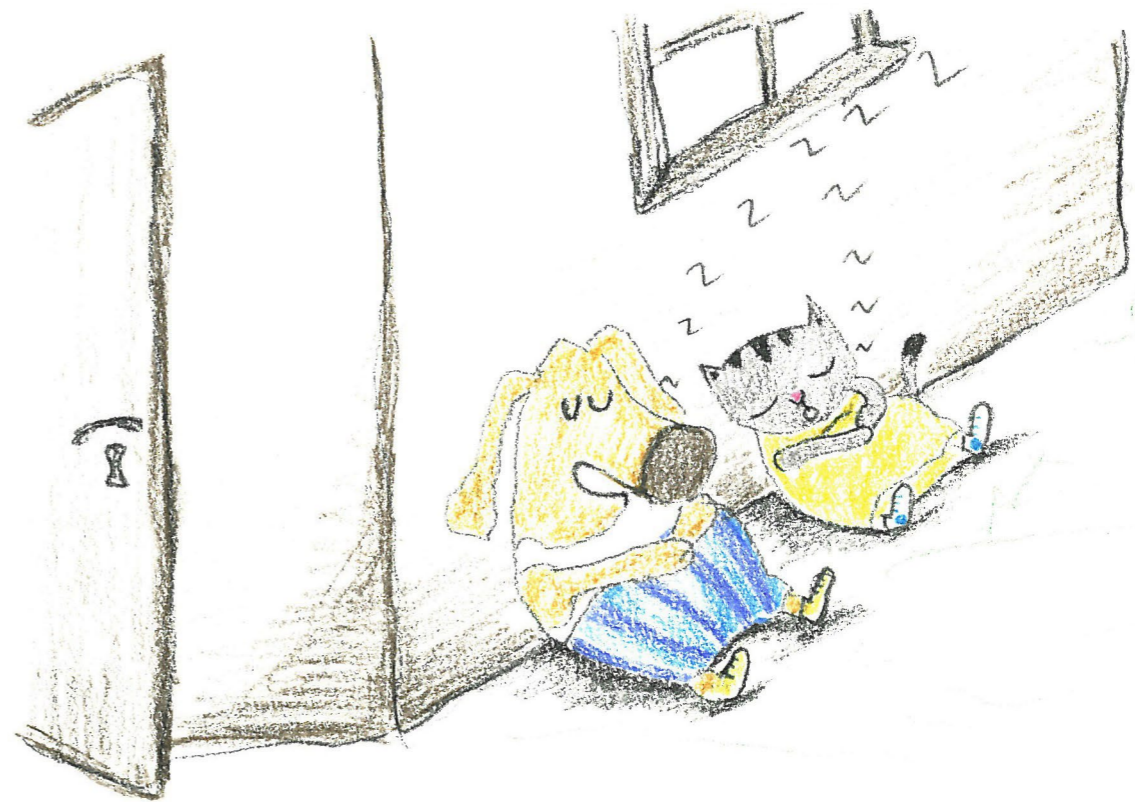
Hansel and Gretel are sad. They are all forlorn.



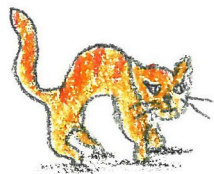
They run and run. Then it is dark. They sleep.
The owls hoot. The wolves growl.



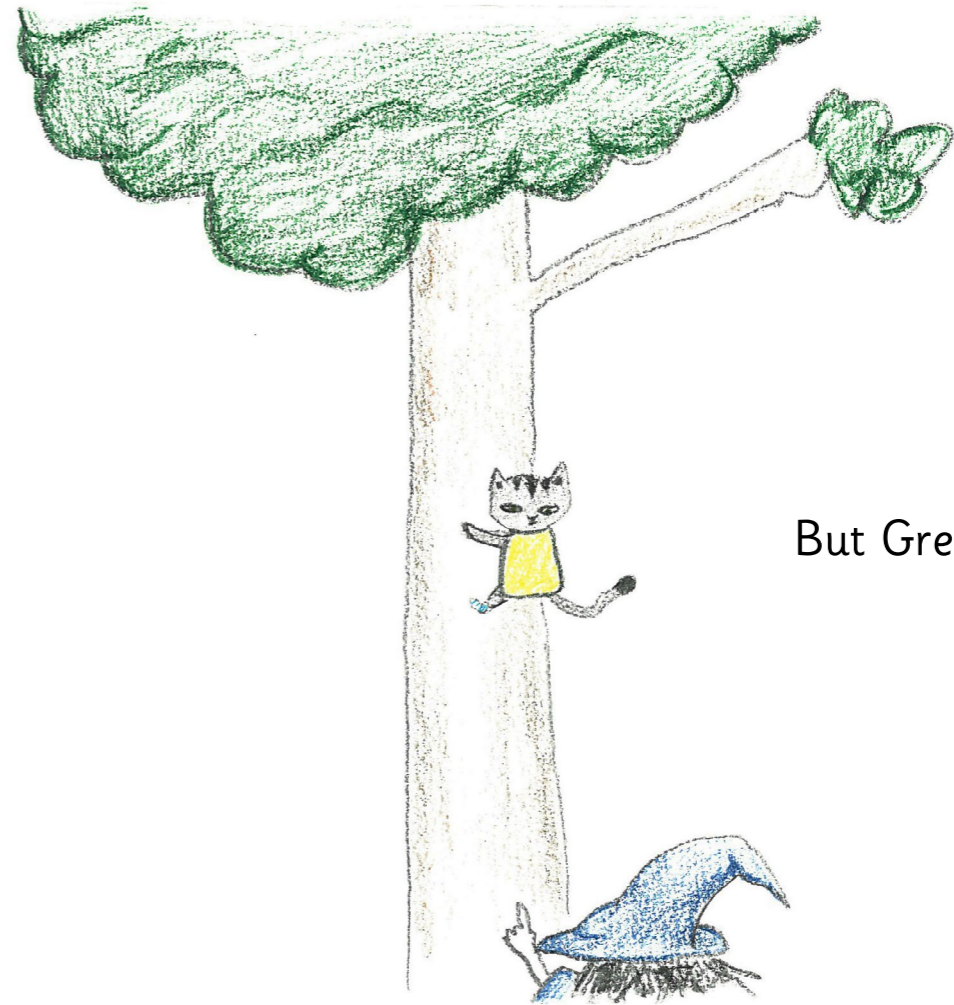
In the morning, Hansel and Gretel see a house. It has good things to eat.



They eat and eat.
Then they do more sleeping.



A witch lives here!
She gets Hansel.



But Gretel runs away.

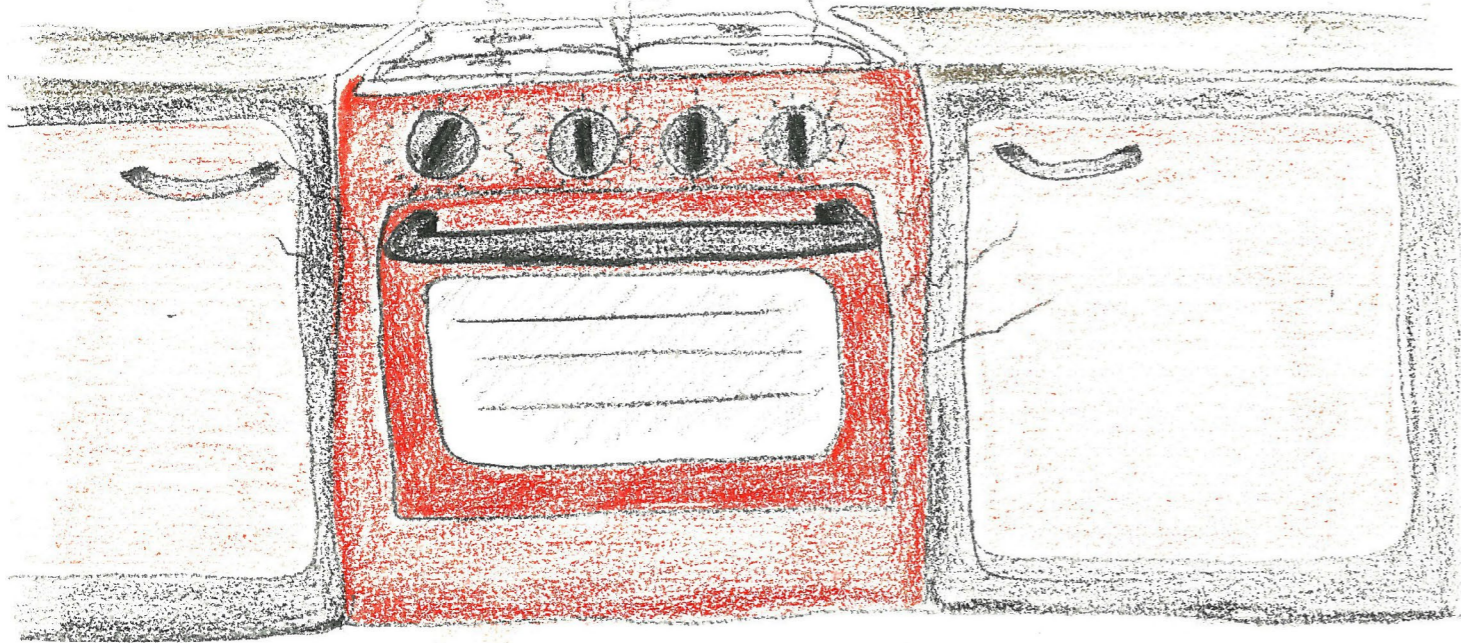
The witch puts Hansel in a big, strong cage.



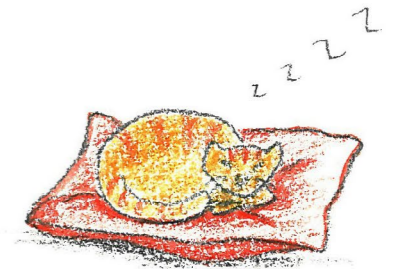
The witch will eat Hansel.
“Yum, yum!” she says.



The witch has an oven.
She will cook Hansel for dinner.



The oven is getting hot.
The witch has a nap.





Gretel creeps into the house.
She sees the witch.




She puts a net all over the witch.



The witch wakes up.
She is stuck! She is very cross.



Gretel gets Hansel out of the cage.

A yellow dog with long ears and a white shirt with a blue striped skirt is running to the right, holding the hand of a grey cat with black stripes and a yellow dress. They are running on a white ground with some faint lines suggesting movement. In the background, there is a green, textured area that looks like a hill or a wall.

They run all the way back to Dad.



Griselda is gone.
Dad is there.
He is very happy to see
Hansel and Gretel.



They live happily ever after.

These are in the story. Are they good or bad?

Hansel
Gretel
Dad
Griselda
The witch



Code-Breakers

Extended Texts ~ Book 3

©2014 William Rowan Hamilton Trust

www.hamilton-trust.org.uk

Registered Charity no. 1150524.

Sounds and letters
/c/ as c, /t/ as t, /a/ as a
/d/ as d, /g/ as g, /o/ as o
/m/ as m, /n/ as n
/i/ as i, /s/ as s and ss
/u/ as u, /r/ as r
/h/ as h, /l/ as l and ll
/e/ as e, /b/ as b
/f/ as f and ff, /sh/ as sh
/p/ as p, /c/ as k and ck
/ee/ as y, /p/ as pp (+ mm, dd, rr, nn)
/ee/ as ee, ea, e
/w/ as w and wh*, /ch/ as ch
/th/ as th, /ng/ as ng
/tthh/ as th, /v/ as v and ve
/oo/ as oo, u and oul
/j/ as j, /ar/ as ar and a*
/ou/ as ou, ow and ough
/or/ as or, ore, aw and a
/ay/ as ay, a-e, ai
/ie/ as y, ie, i-e, i and igh
/cw/ as qu/, /cs/ as x, /y/ as y
/oa/ as ow, o, oa, oe and o-e
/ooh/ as oo, ew, o
/z/ as z, zz and s, /g/ as, gu and gh
/er/ as er, ur, ir, ear and or
/s/ as c, se and ce
/j/ as g, ge and dge
/l/ as le + tt, gg, bb
/ue/ as ew, u-e and u
/ch/ as tch, /oy/ as oi, oy